



TOPOTRADE
Strada IACOB NEGRUZZI
nr. 44, 011094, Bucuresti-1
(+40) 722 620 305
email: topotrade@yahoo.com
www.topotrade.ro

HERON[®] LITE Color

Light and comfy handheld 3D mapping system.

LiDAR sensor for 3D geometry acquisitions.

RGB panoramic camera working **on-demand** at 5k.

Perfect for **indoor** surveying, garden, **stockpiles** volumes, geospatial and **digital twin** projects.

On-premise software packages for full data processing.



HERON family

INDOOR/OUTDOOR

Wearable or handheld mobile laser scanner. Versatile and suitable for any environment.

Your unmatched SLAM-based solution!

AUTOMATIC

Turn on the system and start surveying. Just walk and let the scanner work for you.

Enjoy a professional system easy-to-use!

DIGITAL TWIN

3D point clouds and 5k pano images for immersive tours of your models.

The scanner you can no longer give up!

ALL-IN-ONE

Full software included. Complete data processing and managing of measurements.

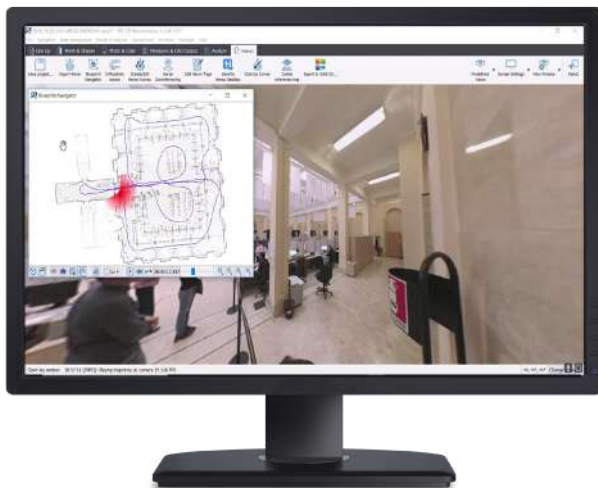
A forefront technology at your fingertips!

USABILITY

- **RGB** data acquisition: on-demand at 5K for very detailed images when requested
- **Control points** and scans used **as constraints**
- Loop closure and **initialization** procedure **not required**
- Handheld or wearable design
- **Versatile capture head** dockable also to a rugged backpack or vehicles (cars, bikes, quads, etc.)
- Rugged touch screen Control Unit providing:
 - Full system control
 - Annotations
 - Real-time view of the point cloud generation and the acquired panoramic images
 - Hands-free configuration

DATA PROCESSING

- **Accurate** 3D colorized models
- **Automatic mapping of color** data on 3D model
- **Very dense point cloud rendering** with multiple color layers
- Direct export of images and 3D data to **ReCap Pro**
- Easy data export to third-party software (e.g. 3DM Feature Extraction, EdgeWise, Micromine, Scene, Verity) and **cloud platforms** (e.g. 3DM Cloud, 3DUserNetVISION, Cintoo Cloud, Scene Webshare) through the .e57 format
- Advanced point cloud rendering which emphasizes **features and details**
- **3D models navigation** tools



APPLICATIONS

- Indoors
- Stockpiles
- Single Floor Acquisition
- Cadastral Survey
- BIM Models
- Forensic
- Real Estate Assets Management
- Cultural Heritage
- Geospatial
- Forests
- Digital Twin
- Urban Areas
- Outdoors (with geometry)
- Fast and sharable Plan Views
- Multi-sensor Projects

INCLUDED SOFTWARE

What you need to create and navigate 3D models and share results



HERON Desktop®

Post-processing SLAM software

Software to extract 3D point cloud models from HERON measurements with: patented SLAM algorithm; time bar to organise processing as desired; filtering of moving objects. Advanced mode for total control of SLAM algorithm parameters. Use of scans and control points as constraints.



Reconstructor®

Advanced 3D point cloud analysis software

Professional software for advanced point cloud management and editing. Data processing from HERON or from terrestrial/mobile/UAV laser sensors. Powerful automatic and target-less scans alignment. Data export to ReCap, E57 and various standard formats. Full compatibility with various third-party software and cloud platforms. RGB camera calibration, HERON survey navigation, mesh and DTM generation, volume computation, sections and profiles.



GoBlueprint®

Blueprint map manager

Intuitive visualiser of scaled x-ray images (orthophotos of the cloud of 2.5D points), designed to easily extract measurements (volumes, distances, areas) even by non-3D specialist users. Compatible with any Windows tablet or PC. Free tool.

